

## Testing:

Once connected to the 240V mains supply, the unit must be allowed to charge the battery for at least 24 hours. Conduct the following tests:

- For the first test, the emergency lamp must remain illuminated for at least 2 hours after disconnection from the mains supply.
- Subsequent tests require the unit to illuminate for at least 90 minutes. The results of all tests are required to be recorded in a service logbook, which is to be kept on-site at all times. If the unit fails to remain illuminated for the requisite time, remedial action must be taken to repair the situation and once completed, the unit must pass a subsequent test. For more specific information, please refer to the current edition of the AS 2293.3 Standard.

## Trouble Shooting:

Below are a list of common problems and their possible causes.

**Fault:** The Green LED Test Switch indicator is not illuminated.

Check: A.C. is connected and is turned on.  
Battery is connected  
Test Switch for damage.

**Fault:** Lamp does not illuminate in emergency mode.

Check: A.C. is connected.  
Lamp is correctly inserted.  
Battery is connected

**Fault:** Lamp illuminates in emergency mode, but only stays on for a short period.

Check: Battery has been allowed to charge for at least 24 hours.  
Battery for damage.

**Fault:** Green LED flashes once every 5 seconds-Battery is disconnected

Check: Battery is connected.

**Fault:** Green LED blinks off once every 5 seconds- Charging very flat battery

Allow 20min to recover battery then recheck

**Fault:** Green LED flashes at 2Hz (Fast flash)- Faulty battery

Replace battery

## Rated Emergency Lumen Output in accordance with AS2293.1 (refer to spacing tables for installation positions):

Refer to the Technical Label for classification information.

## Caution:

On many building sites, power circuits may be cut off in an uncontrolled and repetitive basis during construction. As a result, any Exit & Emergency Units, on these circuits, will have their batteries discharged or "cycled". The battery in this fitting has been selected to give excellent long life performance in a controlled AS2293 testing environment. Excessive battery cycling will reduce through-life performance and may lead to premature battery failure. Battery warranty claims, as a result of such abuse, are specifically EXCLUDED from Clevertronics warranty terms.

## Warranty:

For Product Warranty information and Terms and Conditions of Sales please refer to our website <http://clevertronics.com.au/terms-conditions-sale-australia-nz/>



# Trade Series Economy Spirit Exit Installation & Maintenance Instruction Leaflet



Designed in Australia to comply with the requirements of  
AS2293.3: 2018 and AS/NZS CISPR15: 2017

### Victoria (Head Office & Manufacturing)

Website: [www.clevertronics.com.au](http://www.clevertronics.com.au)

Email: [info@clevertronics.com.au](mailto:info@clevertronics.com.au)

Phone: +61 3 9559 2700

Fax: +61 3 9559 2799

### New South Wales

Phone: +61 2 8805 6400

Fax: +61 2 8805 6444

### Queensland

Phone: +61 7 3442 9700

Fax: +61 7 3442 9777

### South Australia/Northern Territory

Phone: +61 8 8301 8800

Fax: +61 8 8351 8286

### Western Australia

Phone: +61 8 9207 0000

Fax: +61 8 9207 0088

### New Zealand

Phone: +64 800 548 448

**Models:** SPIRIT-xx

## Options:

White xx=< blank >

Black xx=BLK

## Spare Parts:

1560180	Replacement Battery
8003550	Replacement Emergency Driver
8011960	Replacement Emergency LED Board

## Important:

It is illegal for anyone, except for a licensed electrician to install or maintain this product. Before installation, ensure that the electricity supply has been switched off and isolated. Installation must be carried out in accordance with the relevant Australian and International Standards.

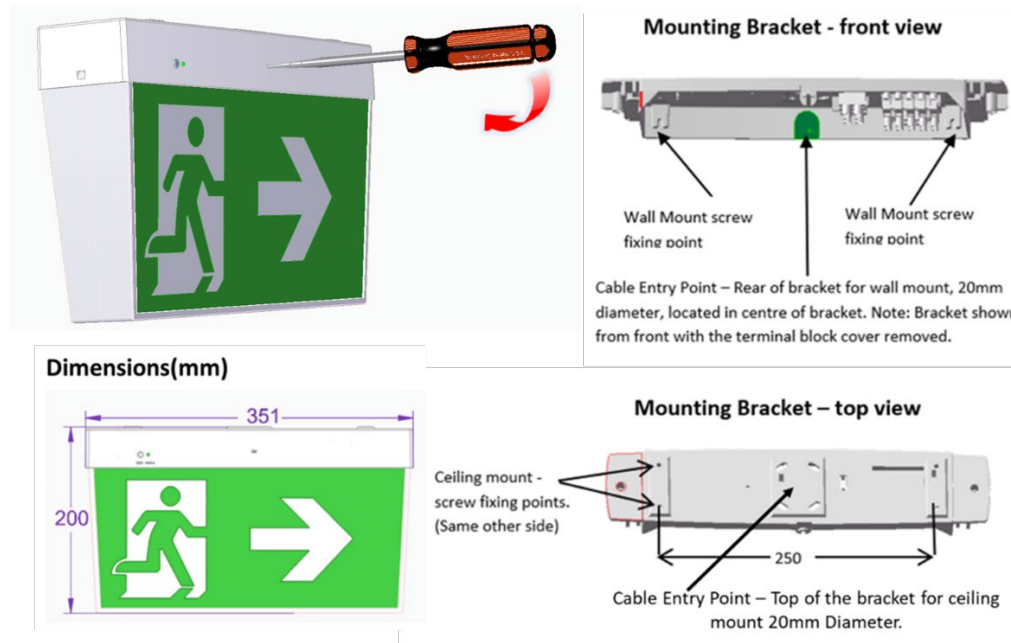
## Installation:

The Trade Series LED Exit (SPIRIT) can be installed either Ceiling or Wall Mounted and can be mounted perpendicular to a wall using the (optional) Cantilever Bracket. The SPIRIT uses a "slide connect bracket base" that is mounted and wired into position first. The main body can be installed once the base is wired or later to avoid damage during the construction phase. Please follow the steps below to install the Spirit Exit:

- Disengage the slide connect bracket by inserting the Flat head screwdriver through the slot on the front face of the main body(see Image Below), Lever the screwdriver and Slide the bracket out from the Body.
- Position the base in the mounting position.
- Using the bracket as a guide, mark 2 holes for mounting and one for mains access. Then install the bracket using appropriate fixings (not supplied).
- Terminate the 240V supply to terminal block on the bracket, The terminals are marked L(live/Active), E(Earth Loop) and N(neutral)
- Configure all the mounting parts and cable entry points as below (if required) and engage the body into the slide connect bracket. Apply mains power and check that the Exit is operational.

## Maintained/Non-Maintained Operating Mode:

Press the Test Button 5 times within a 4 second period to toggle operation of the fitting between Maintained and Non-Maintained mode



### Note:

This luminaire (with reinforced insulation between control/LED terminal and AC Supply) contains non-user replaceable light source and battery – to be replaced (if required, refer installation instructions for battery replacement) by the manufacturer or his service agent or a similar qualified person.

## Battery Replacement:

- Use only the battery recommended on the label inside the Exit and on this instruction.
- Remove the exit of the bracket by disengaging the Locking clip
- The battery is located in the top of the fitting.
- Remove the clip holding the battery.
- Unplug the battery from the PCA and remove it.
- Insert the new battery into the holder, route the DC cable to the PCA and plug the new battery into the connector.

## Changing Exit Legend Inserts:

The Spirit comes complete with spare legend inserts to enable straight on, left or right arrow as well as SS/DS combinations.

To change an Exit legend, first remove the diffuser. The diffuser is removed by compressing the short side near the main body, this will release the diffuser clip. Now lever the diffuser down and away from the Main Body.



Choose the required Legend Configuration. Glide the Legend into the slots on the diffuser making sure that all the tabs have entered the provided slots. There is a total of 6 tabs, 4 along the bottom face and 2 on top. If a double-sided Legend configuration is required, make sure to insert Legend on both sides of the diffuser. Once the required Legends are attached to the diffuser mount the diffuser back into the main body. Make sure that both side diffuser clips are engaged.

